

# 5885 Central Avenue

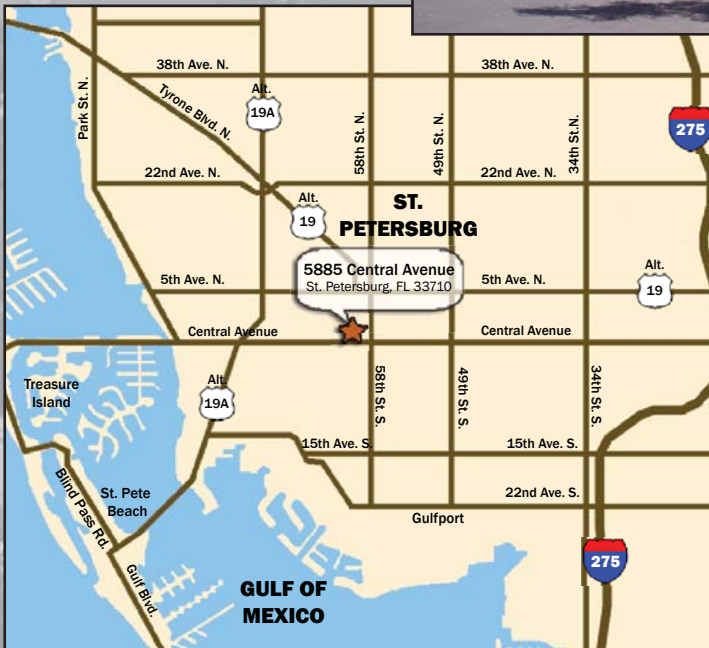
St. Petersburg, FL 33710

## Medical Office/Office Space Available for Lease

*Prominently located on Central Avenue, the property offers high quality medical office space in a convenient South Pinellas location.*



**5,500 Square Feet Available**



- Convenient access to Downtown St. Petersburg and I-275
- Located at the intersection of Central Ave. and 58th St. North
- Minutes from local hospitals
- Available suite offers private exterior entrances
- Ample parking and lush landscaping
- High visibility location
- Monument signage available
- Recently constructed contemporary architecture

For Additional Information Please Contact  
Avi Adler or Judy Healey:

**(813) 908-1727**

Email: [aadler@ciminelliflorida.com](mailto:aadler@ciminelliflorida.com)  
[jhealey@ciminelliflorida.com](mailto:jhealey@ciminelliflorida.com)

**Ciminelli**  
REAL ESTATE SERVICES OF FLORIDA

3928 Premier North Drive  
Tampa, FL 33618

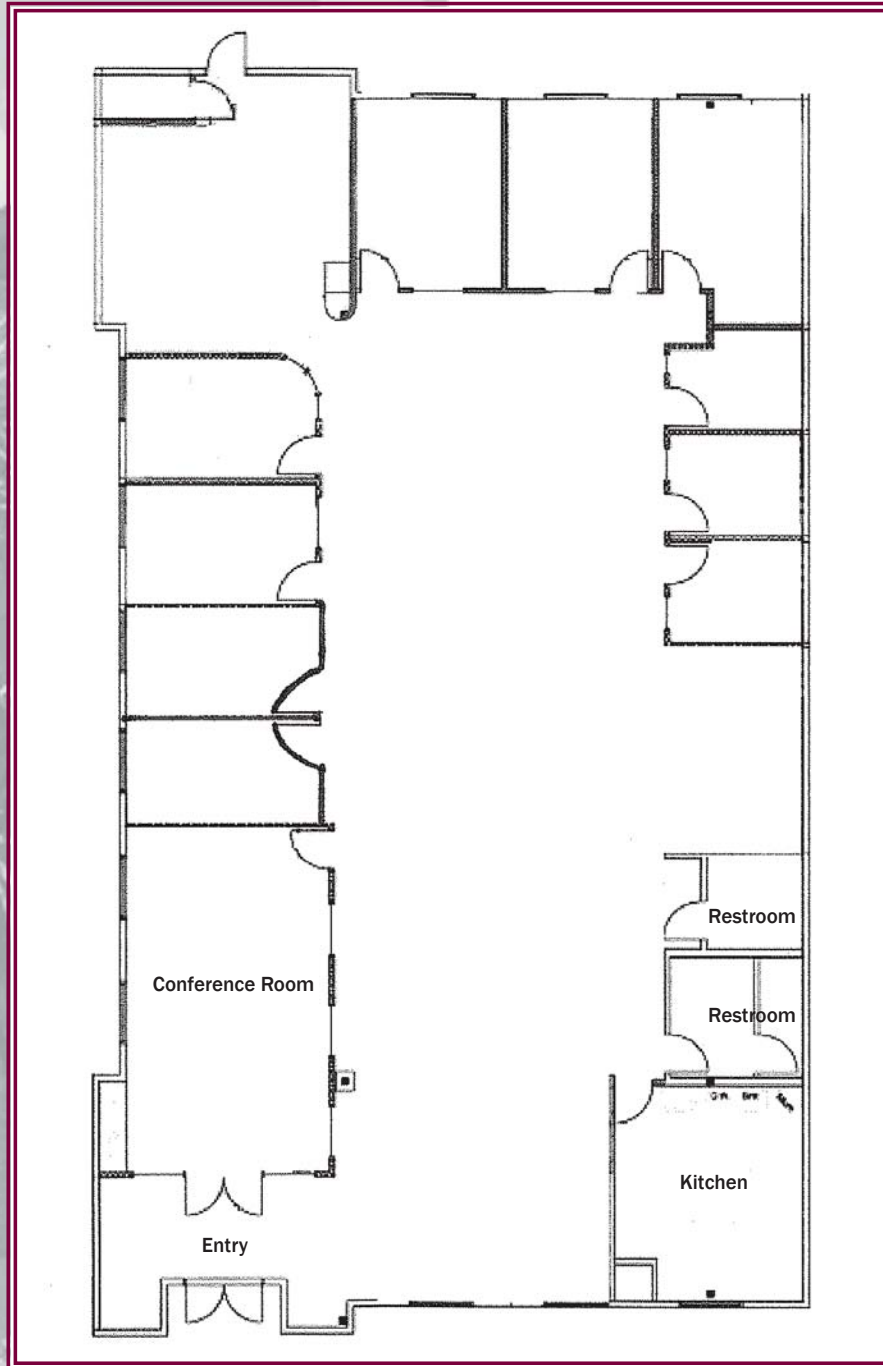
Ph: (813) 908-1727 • Fax: (813) 908-5518

[www.ciminelliflorida.com](http://www.ciminelliflorida.com)

Licensed Real Estate Broker

# Healthsouth Plaza

5885 Central Avenue  
St. Petersburg, FL 33710



5,500 RSF

For Additional Information Please Contact  
Avi Adler or Judy Healey:

**(813) 908-1727**

Email: [aadler@ciminelliflorida.com](mailto:aadler@ciminelliflorida.com)  
[jhealey@ciminelliflorida.com](mailto:jhealey@ciminelliflorida.com)

**Ciminelli**  
REAL ESTATE SERVICES OF FLORIDA

3928 Premier North Drive  
Tampa, FL 33618

Ph: (813) 908-1727 • Fax: (813) 908-5518

[www.ciminelliflorida.com](http://www.ciminelliflorida.com)

Licensed Real Estate Broker